



Grant with World Farmers Green Team Presentation

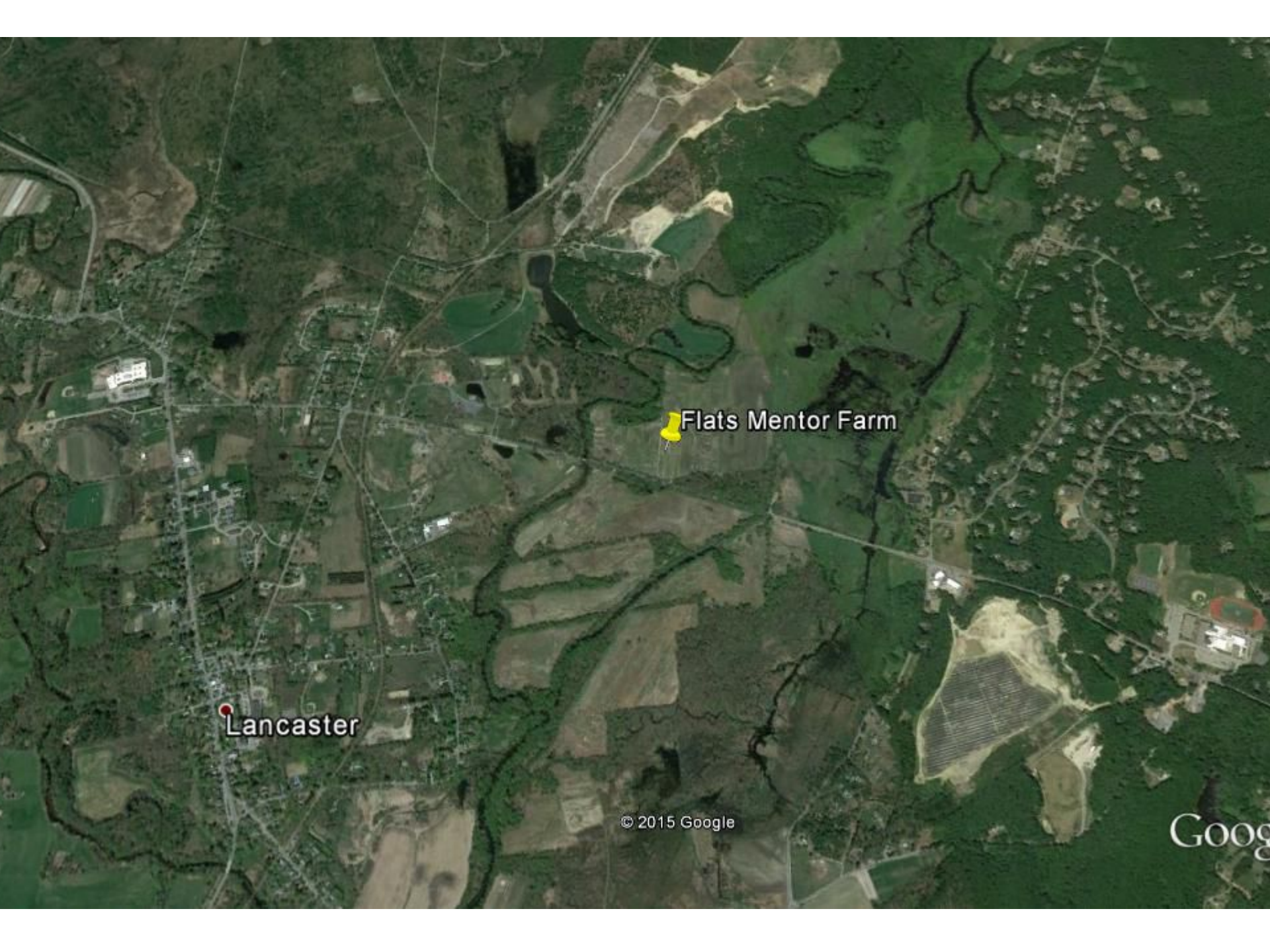
Tim Castner

Nick Nastasi

Paige Farren

Key Questions

- How can we develop viable partnerships with groups in the local community?
- How can we engage students in “real world” experiences, develop twenty first century skills, and prepare them for coming environmental challenges
- Mission Statement and Core Belief Connections:
 - To foster and sustain educational services that support, enrich and extend our curriculum for all students.
 - Our communities are resources



Lancaster

Flats Mentor Farm

© 2015 Google

Google



A New England Food Vision



- *Healthy Food for All*
- *Sustainable Farming and Fishing*
- *Thriving Communities*



Copyrighted Material

PHILIP ACKERMAN-LEIST foreword by Deborah Madison

REBUILDING THE FOODSHED

How to CREATE LOCAL, SUSTAINABLE,
and SECURE FOOD SYSTEMS



A COMMUNITY RESILIENCE GUIDE

Copyrighted Material

Partners in the Grant

- World Farmers – Maria Moreira
- University of Massachusetts Extension Program (Crop and Pest Management)
- Growing Places (Provide gardening training to immigrant communities)
- Rural Coalition (Learn Best Practices and provide Training)
- Lancaster Community Center (Publicity and business training)
- Lancaster Agricultural Commission (Provide space at farmers market and provide training)

Nashoba's Role

- We will receive \$15,000 a year for 3 years.
- Our match will be 80 hours of volunteer time.
- Summer academies for teachers to create interdisciplinary curriculum connected to local agricultural, healthy eating, and immigrant communities.
- 4 summer student interns (with teacher coordinator) to provide marketing assistance, computer training, and ELL instruction.



Green Team



- Core Mission: The Green Team engages the school community in conversations and activities leading to greater sustainability across all aspects of school life.
- Major Activities
 - Recycling
 - Planting/Beautification
 - Earth Day Activities

Short and Long Term Initiatives

- Install refillable Water Bottle Stations at the High School (Partnership with National Honor Society)
- Create a culture of sustainability where students and staff make environmentally responsible actions a daily habit.
- Reduce Electricity Use (\$682,183)
 - (Compliance Incentives?)
- Promote composting in the Cafeteria

How Can the School Committee Help?

- Provide support for sustainability initiatives
 - Do we value short term financial goals or teaching long term sustainable practices?
- Consider ways that the district can model environmental responsibility in our decisions, buildings, and grounds.
 - Solar panels on roofs to offset electrical costs?
- If Environmental issues are one of the greatest 21st century challenges, should we promote “sustainability across the curriculum?”

Five Recent Headlines

- 2015 Likely to be Hottest Year Ever Recorded
 - <http://www.ncdc.noaa.gov/sotc/global/201509>
- Hurricane Patricia - Strongest Storm Ever Recorded in Western Hemisphere
 - <http://www.nytimes.com/2015/10/25/world/americas/hurricane-patricia-mexico.html>
- If We Burn All Fossil Fuels, We Melt All the Ice on the Planet - At current rate of increase by 2150
 - <http://www.nytimes.com/2015/09/12/science/climate-study-predicts-huge-sea-level-rise-if-all-fossil-fuels-are-burned.html>
- Seed Productivity Decreases by 6% with each 1^o f Temperature Increase
 - <http://www.ars.usda.gov/is/ar/archive/aug06/plant0806.pdf>
- World Population to Reach 9.7 billion by 2050
 - <https://www.un.org/development/desa/en/news/population/2015-report.html>